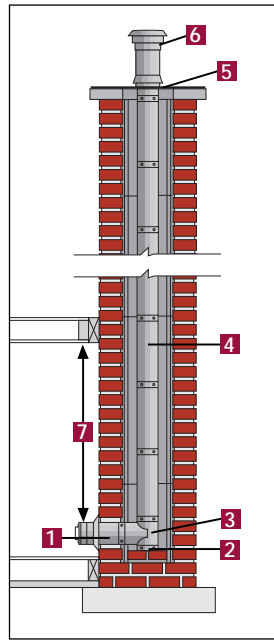


- Stainless steel type 304
- Unique twist-lock connection

## AN EFFICIENT SOLUTION!

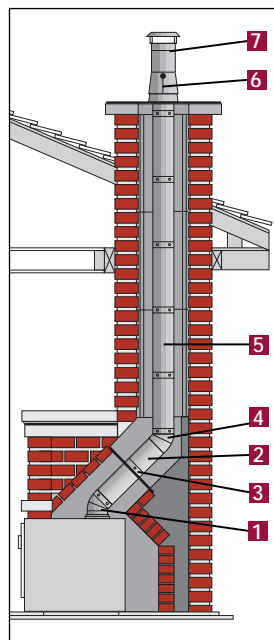


## INSTALLATION



### Straight Installation

- 1 - Masonry adaptor (LMA)
- 2 - Tee cap (TCS)
- 3 - Split base tee (LT)
- 4 - Length (L)
- 5 - Flashing (LST)
- 6 - Deluxe rain cap (LCC)
- 7 - Minimum clearance 18"



### Offset Installation

- 1 - Elbow (LE45/LE90)
- 2 - Adjustable length (L7A)
- 3 - Interior support (LSB)
- 4 - Elbow (LE45/LE90)
- 5 - Length (LL)
- 6 - Support assembly (LSA)
- 7 - Regular rain cap (LCS)

## SAFETY AND PERFORMANCE

### Application

The TUBINOX stainless steel liner is designed for installation in a masonry chimney:

- when the clay liner of an existing chimney is damaged
- to improve the chimney's draft
- or as a substitute of the clay liner in a new masonry chimney

It can be used to vent solid, liquid or gas-fuel fired appliances (coal, wood, oil, etc.).

### For your safety

Time and wear can crack clay liners. Under these conditions, your liner can quickly become a nest for creosote deposits. Should this be the case with your masonry chimney, it would be wise, for safety reasons, to consider the advantages of a TUBINOX stainless steel liner.

The accumulation of creosote inside a chimney can become dangerous. As it is inflammable, creosote is the cause of chimney fires which can spread to become a real danger. The stainless steel liner impedes the adhesion of creosote.

### For great performance

Controlled-combustion stoves are designed accordingly to highly efficient heat transfer and combustion technologies. Their rate of performance increases when they are installed with a chimney of suitable diameter. Clay liners are often too large. Consequently, they remain too cold and do not allow gas to be completely consumed, a situation which leads to gas condensation, thus formation of creosote.

### Additional benefits

- Inexpensive compared to the cost of replacing a damaged masonry chimney. Can be installed in a matter of hours.
- Substitutes the clay liner in a new masonry chimney.
- Improves the chimney's draft
- Stainless steel, type 304
- All components in the TUBINOX system are made of stainless steel
- Certified to standards: UL-1777, ULC-S635M and ULC-S640M at 2100°F (1150°C).

## ORDER FORM

Specify the required diameter: **5 in. 6 in. 7 in. 8 in.**  
Indicate the required parts and the quantity needed for the installation.

	Parts no.	Characteristic	Quant.	Price
<b>Lengths</b>	LL6	6 in.		
	LL12	12 in.		
	LL24	24 in.		
	LL36	36 in.		
	LL48	48 in.		
	L7A	Adj. from 7 to 11 in.		
<b>Flexible pipe</b>	LLFLEX	Stainless Steel (5ft long)		
<b>Adaptor for flexible pipe</b>	LAAM	Male		
	LAAF	Female		
<b>Split base tee</b>	LT	Two parts		
<b>Tee cap</b>	TCS	Stainless steel		
<b>Twist-lock tee cap</b>	LTC	Stainless steel		
<b>Elbows</b>	LE30	30°		
	LE45	45°		
	LE90	90°		
<b>Reducer</b>	6LLR5	6 to 5 in.		
	7LLR6	7 to 6 in.		
	8LLR7	8 to 7 in.		
<b>Increaser</b>	5LLW6	5 to 6 in.		
	6LLW7	6 to 7 in.		
	7LLW8	7 to 8 in.		
<b>Masonry adaptor</b>	LMA	Finishing collar incl.		
<b>Ins. wall radiation shield</b>	LRSMI	Adjustable 6 to 12 in.		
<b>Flashing</b>	LST	Two parts		
<b>Support assembly</b>	LSA	Three parts		
<b>Interior support</b>	LSB	Support collar incl.		
<b>Deluxe rain cap</b>	LCC			
<b>Regular rain cap</b>	LCS			



SECURITY CHIMNEYS  
INTERNATIONAL



Security Chimneys International is certified ISO 9001, your guarantee of quality and satisfaction for years to come.

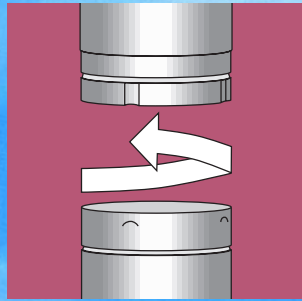
AD-TUB  
REV: 2 06-1999  
Printed in Canada

Security Chimneys International Ltd.  
2125 Monterey  
Laval (Quebec)  
Canada H7L 3T6  
Tel.: (450) 973-9999  
Fax.: (450) 973-2222

Specifications subject to change without prior notice.

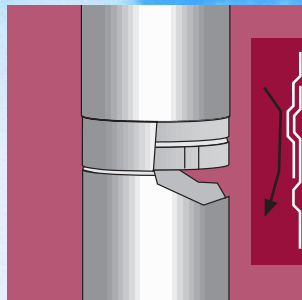
**Distributed by:**

## THE ADVANTAGES OF SECURITY CHIMNEYS INTERNATIONAL'S TUBINOX PRODUCT.



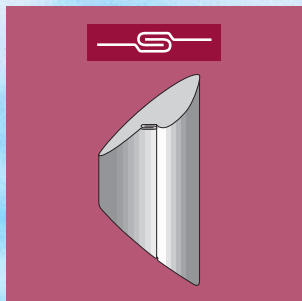
### Twist-lock system

The TUBINOX can be installed simply and easily, thanks to its unique twist-lock system. Just slip the components together and twist 1/8th of a turn.



### Dripless connection

Dripless connection keeps creosote and condensation inside the liner.



### Greater resistance to corrosion and deformation

- Manufactured with 304 type stainless steel renowned for its resistance to corrosion.
- Double-lock seam provides superior strength and prevents deformation.



### Lifetime Limited Warranty

Tubinox liner is covered by a Lifetime Limited Warranty. See your dealer for complete details.

## GENERAL PARTS



### LL Lengths

Five standard lengths of 6, 12, 24, 36 and 48 inches are available. They can be assembled easily to construct a chimney liner of the required height. Available in 5", 6", 7" and 8" I.D.



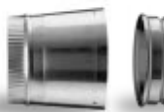
### L7A Adjustable length

Adjustable length makes it possible to adjust the liner to the required height. Telescoping from 7 to 11 inches (17.7 to 27.9 cm).



### LLFLEX Flexible length

Used for offsets where it is difficult to install rigid liner elbows. Made of 304 type stainless steel. The flexible length must be attached to male and female adaptors. (Adaptors sold separately).



LAAM LAAF

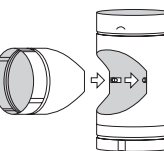
### LAAM/LAAF Adaptor for flexible pipe

Used to connect flexible lengths to rigid parts. (Sold separately).



### LT Split base tee

As the width of a masonry chimney is often restricted to a minimum, our split base tee features a removable snout. The snout is fastened to the other section of the tee from the inside of the flue. The tee cap is not included. (TCS or LTC)



TCS



LTC

### TCS/LTC

#### Regular or twist-lock tee cap

Used under the tee allowing the inspection and cleaning of the installation. Available in two versions: a regular cap screwed to the bottom of the tee. Or a twist-lock cap featuring a longer flue and a handle to facilitate access.



### LE30 Elbow 30°

Used to offset the liner by 30° angle.



### LE45 Elbow 45°

Used to offset the liner by 45° angle.



### LE90 Elbow 90°

Used to offset the liner by 90° angle.



LLR



LLW

### LLR/LLW

#### Reducer and increaser lengths

Required to adapt the liner to smaller or larger flue diameters.



### LMA

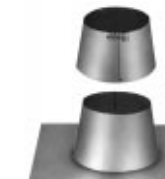
#### Masonry adaptor

Designed for use at the indoor exit of the masonry chimney, it comes complete with decorative collar and connects with the stove pipe.



### LRSMI Insulated wall radiation shield

Designed to cross a combustible wall adjacent to a masonry chimney. The wall radiation shield must be adjusted to the wall of the masonry. This shield can be adjusted from 6 to 12 inches. Available in 6" and 7".



### LST Flashing

Its ingenious design allows for thermal expansion.



### LSA Support assembly

Used to support the liner from the top of the chimney allowing space for thermal expansion. Made of stainless steel (type 304); it includes a support collar locking around the flue, and a storm collar to ensure a watertight seal.



### LSB Interior support

Supports the liner from the inside installations with deviation and includes a support collar locking around the flue.



### LCC Deluxe rain cap

An essential finishing part, its efficient design minimizes the introduction of snow or rain without reducing the required draft.



### LCS Regular rain cap

An essential finishing part, it prevents rain from entering.