



Vent System for Category II, III, IV Gas-Fired Appliances



SECURITY CHIMNEYS
INTERNATIONAL™

CTXD

Secure Seal™
Double-Wall Gas Vent

CTXD Secure Seal™

CTXD applications

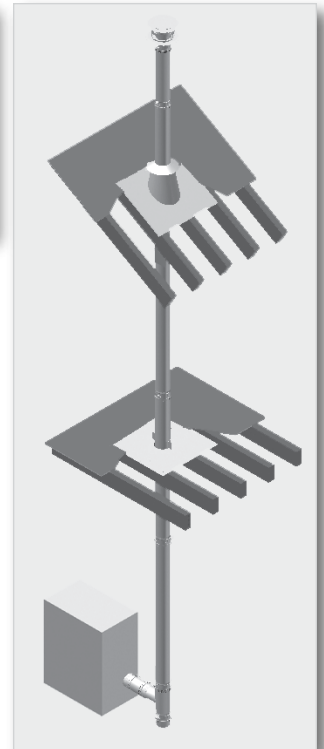
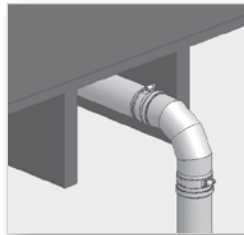
The CTXD Secure Seal™ venting system is the answer to most modern venting needs.

- Category II, III and IV gas-fired appliances
- Type BH gas vent systems for appliances having a maximum flue temperature of 480°F
- May also be used for high-efficiency gas boilers, furnaces, booster heaters, pool heaters, water heaters, unit heaters or tankless water heaters
- Installs quickly and easily with self-sealing Secure Seal gaskets and built-in mechanical gear clamps



A tradition of excellence

For over 30 years, Security Chimneys™ has been an innovator in the venting field and a market leader in North America. Instrumental in the company's growth has been an ongoing focus on product improvement and the introduction of new, innovative products. This drive for excellence has given rise to the CTXD Secure Seal venting system, a line of high-quality products that deliver optimal performance.



CTXD – Vertical installation through the roof

Quality and dependability

The CTXD flue (inner tube) is manufactured from AL29-4C®*; a super-ferritic stainless steel designed for extreme resistance to chloride ion pitting, crevice corrosion and stress corrosion cracking, as well as general corrosion in oxidizing and moderately reducing environments. AL29-4C is the ideal choice for withstanding the harmful effects of corrosive condensates created by partially or fully condensing high-efficiency natural gas and propane-fired heating appliances.

The Canadian Gas Research Institute found that test results proved AL29-4C to be one of the two “most corrosion-resistant alloys of 20 candidate stainless steels evaluated for resistance to chloride-induced corrosion in condensing and partially condensing gas-fired appliances.”

To guarantee a perfect fit every time and to avoid built-in stress points or weak areas, tube ends are formed under stringent guidelines and held to exacting standards.

The casing (outer tube) is manufactured from type 304 (standard) or type 430 stainless steel to provide long-lasting performance and stability inside a building when exposed to the outdoors.

The air space between the flue and casing is 0.5", providing close clearances to combustibles, reasonable outside dimensions and an additional heat shield or margin of safety where needed.

Built to last

CTXD features a smooth weld seam inside and out, which is completely shielded during the TIG welding process. Contamination or molecular changes in the weld seam are avoided and no fillers are used in the welding process.

Feature	Benefit
Laser butt-welding	<ul style="list-style-type: none">• Reinforces strength• Prevents leakage• Increases durability and reliability
Built-in mechanical gear clamps	<ul style="list-style-type: none">• Provides quick and easy assembly and disassembly• Requires less time on the job site
Secure Seal™ sealing gaskets	<ul style="list-style-type: none">• Self-sealing, so there's no need to apply sealing material when pieces are joined together• Easier and faster installation
Wall thimble with built-in adjustable vent length	<ul style="list-style-type: none">• Provides horizontal adjustability with no requirement to cut the pipe
Standard adjustable vent length	<ul style="list-style-type: none">• Provides vertical or horizontal adjustment for easy system pitching
AL29-4C® stainless steel	<ul style="list-style-type: none">• Resists the extreme corrosive environments found in condensing boilers• Assures safe and trouble-free operation
Proven track record	<ul style="list-style-type: none">• Tested and listed by Underwriters Laboratories, Inc. to UL 1738 & ULC-S636• 15-year warranty

The CTXD double-wall system is fully interchangeable with our CTX single-wall system. CTXD has been tested and listed by Underwriters Laboratories, Inc. to UL 1738 and ULC-S636-95 safety standards. When installed according to Security Chimneys™ installation instructions, CTXD meets all test requirements for horizontal and vertical, interior or exterior installations.

*AL29-4C® is a registered trademark of Allegheny Ludlum Corporation.

CTXD Secure Seal™

Installation made easy

Each CTXD vent length and component features a built-in mechanical locking band and gasket. Parts are easily pushed together to a stop bead, which causes the joints to become air- and water-tight. By tightening the integrated mechanical locking band, parts are fastened together instantly and effortlessly.



CTXD can be taken apart and easily reassembled, making inspection, maintenance or rerouting of CTXD systems simple and straightforward. If a component or gasket becomes damaged, replacement takes less than five minutes without harming the integrity of the system.

Adjustable vent lengths featured in wall radiation shields allow built-in horizontal adjustability without the need for cutting pipe. A standard adjustable vent length allows 4" to 12" of adjustment, simplifying pitching of the CTXD to properly drain condensate. Connecting the CTXD to a heater is effortless with one of the many adaptors approved by heating appliance manufacturers. Heating equipment can be operated immediately upon completing a CTXD installation, as no cure time or cleanup is required.

Clearance to Combustibles

Rated Operating Temperature, °F		Minimum Clearance Enclosed		Clearance Unenclosed	
		Horizontal	Vertical	Horizontal	Vertical
3" & 4"	300°F	3"	1"	1"	1"
	400°F	6"	1"	3"	1"
	480°F	6"	4"	3"	1"
5" - 16"	300°F	3"	1"	1"	1"
	400°F	6"	1"	3"	1"
	480°F	6"	6"	3"	3"

Rated Operating Temperature of 300°F = Max Flue Gas Temperature of 375°F
 Rated Operating Temperature of 480°F = Max Flue Gas Temperature of 550°F

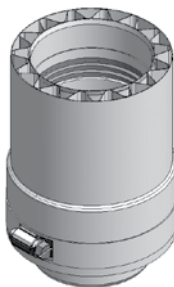
Material Thickness AL29-4C®*

Inner Wall Material Thickness	
3" - 7" (76.2mm-177.8mm)	.016" (.4mm)
8" - 12" (203.2mm-304.8mm)	.019" (.5mm)
14" - 16" (355.6mm-406.4mm)	.024" (.6mm)
Outer Wall Material Thickness	
3" - 6" (76.2mm-152.4mm)	.016" (.4mm)
7" - 16" (177.8mm-406.4mm)	.024" (.6mm)

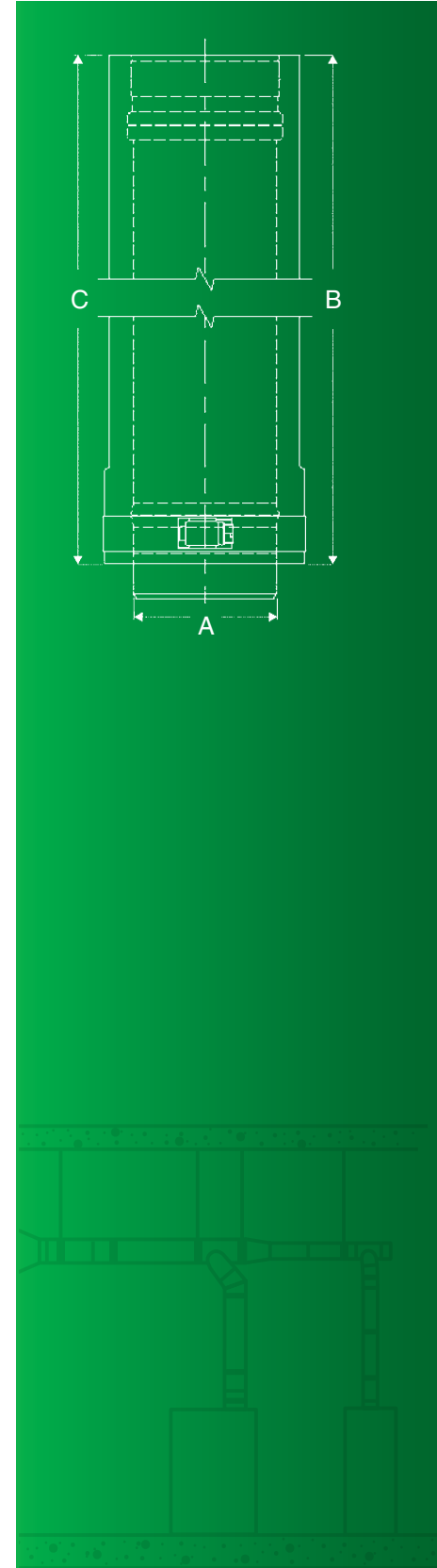
*AL29-4C® is a registered trademark of Allegheny Ludlum Corporation.

Venting Lengths

CTXD Vent Lengths



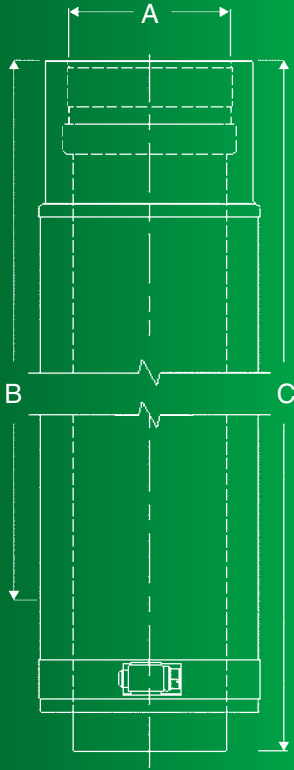
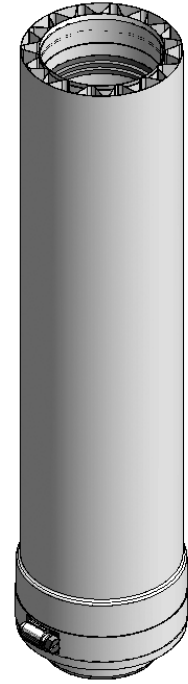
A (in.)	B (in.)	C (in.)	Product Code
3.00	34.30	36.00	CTXD3L36
3.00	22.30	24.00	CTXD3L24
3.00	16.30	18.00	CTXD3L18
3.00	10.30	12.00	CTXD3L12
3.00	4.30	6.00	CTXD3L6
4.00	34.30	36.00	CTXD4L36
4.00	22.30	24.00	CTXD4L24
4.00	16.30	18.00	CTXD4L18
4.00	10.30	12.00	CTXD4L12
4.00	4.30	6.00	CTXD4L6
5.00	34.30	36.00	CTXD5L36
5.00	22.30	24.00	CTXD5L24
5.00	16.30	18.00	CTXD5L18
5.00	10.30	12.00	CTXD5L12
5.00	4.30	6.00	CTXD5L6
6.00	34.30	36.00	CTXD6L36
6.00	22.30	24.00	CTXD6L24
6.00	16.30	18.00	CTXD6L18
6.00	10.30	12.00	CTXD6L12
6.00	4.30	6.00	CTXD6L6
7.00	34.30	36.00	CTXD7L36
7.00	22.30	24.00	CTXD7L24
7.00	16.30	18.00	CTXD7L18
7.00	10.30	12.00	CTXD7L12
7.00	4.30	6.00	CTXD7L6
8.00	34.30	36.00	CTXD8L36
8.00	22.30	24.00	CTXD8L24
8.00	16.30	18.00	CTXD8L18
8.00	10.30	12.00	CTXD8L12
8.00	4.30	6.00	CTXD8L6
9.00	34.30	36.00	CTXD9L36
9.00	22.30	24.00	CTXD9L24
9.00	16.30	18.00	CTXD9L18
9.00	10.30	12.00	CTXD9L12
9.00	4.30	6.00	CTXD9L6
10.00	34.30	36.00	CTXD10L36
10.00	22.30	24.00	CTXD10L24
10.00	16.30	18.00	CTXD10L18
10.00	10.30	12.00	CTXD10L12
10.00	4.30	6.00	CTXD10L6
12.00	34.30	36.00	CTXD12L36
12.00	22.30	24.00	CTXD12L24
12.00	16.30	18.00	CTXD12L18
12.00	10.30	12.00	CTXD12L12
12.00	4.30	6.00	CTXD12L6
14.00	34.30	36.00	CTXD14L36
14.00	22.30	24.00	CTXD14L24
14.00	16.30	18.00	CTXD14L18
14.00	10.30	12.00	CTXD14L12
14.00	4.30	6.00	CTXD14L6
16.00	34.30	36.00	CTXD16L36
16.00	22.30	24.00	CTXD16L24
16.00	16.30	18.00	CTXD16L18
16.00	10.30	12.00	CTXD16L12
16.00	4.30	6.00	CTXD16L6



Venting Lengths

CTXD Adjustable Vent Lengths

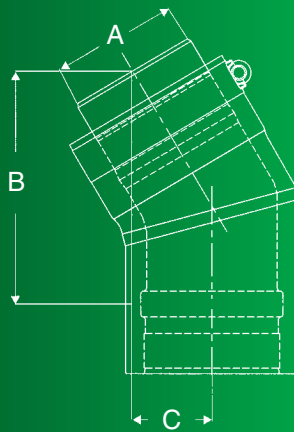
A (in.)	B (in.)	C (in.)	D (in.)	Product Code																																		
3.00	2.0-14.0	18.00	N/A	CTXD3LA																																		
4.00	2.0-14.0	18.00	N/A	CTXD4LA																																		
5.00	2.0-14.0	18.00	N/A	CTXD5LA																																		
6.00	2.0-14.0	18.00 <td N/A	CTXD6LA	7.00	2.0-14.0	18.00	N/A	CTXD7LA	8.00	2.0-14.0	18.00	N/A	CTXD8LA	9.00	2.0-14.0	18.00	N/A	CTXD9LA	10.00	2.0-14.0	18.00	N/A	CTXD10LA	12.00	2.0-14.0	18.00	N/A	CTXD12LA	14.00	2.0-14.0	18.00	N/A	CTXD14LA	16.00	2.0-14.0	18.00	N/A	CTXD16LA
7.00	2.0-14.0	18.00	N/A	CTXD7LA																																		
8.00	2.0-14.0	18.00	N/A	CTXD8LA																																		
9.00	2.0-14.0	18.00	N/A	CTXD9LA																																		
10.00	2.0-14.0	18.00	N/A	CTXD10LA																																		
12.00	2.0-14.0	18.00	N/A	CTXD12LA																																		
14.00	2.0-14.0	18.00	N/A	CTXD14LA																																		
16.00	2.0-14.0	18.00	N/A	CTXD16LA																																		



Venting Elbows

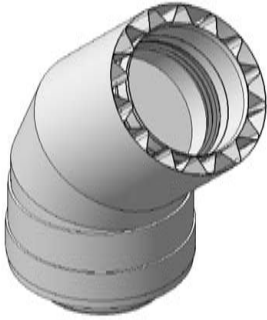
CTXD 30-Degree Elbows

A (in.)	B (in.)	C (in.)	D (in.)	Product Code
3.00	4.90	1.80	N/A	CTXD3E30
4.00	5.20	1.90	N/A	CTXD4E30
5.00	5.40	2.00	N/A	CTXD5E30
6.00	5.70	2.00	N/A	CTXD6E30
7.00	5.90	2.10	N/A	CTXD7E30
8.00	6.10	2.20	N/A	CTXD8E30
9.00	6.40	2.20	N/A	CTXD9E30
10.00	6.70	2.30	N/A	CTXD10E30
12.00	7.20	2.40	N/A	CTXD12E30
14.00	7.70	2.60	N/A	CTXD14E30
16.00	8.20	2.70	N/A	CTXD16E30

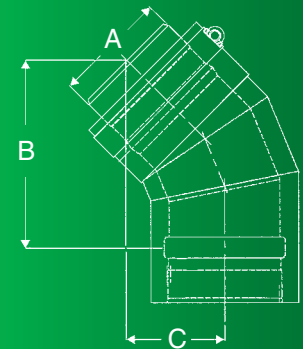


Venting Elbows

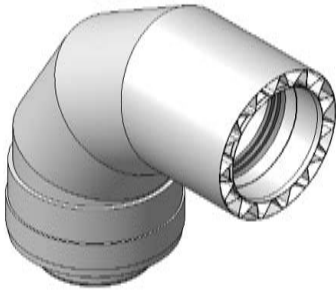
CTXD 45-Degree Elbows



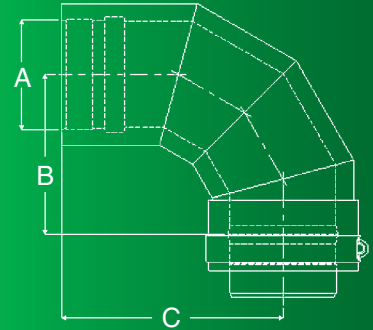
A (in.)	B (in.)	C (in.)	D (in.)	Product Code
3.00	5.20	3.00	N/A	CTXD3E45
4.00	5.60	3.10	N/A	CTXD4E45
5.00	6.00	3.20	N/A	CTXD5E45
6.00	6.30	3.40	N/A	CTXD6E45
7.00	6.70	3.50	N/A	CTXD7E45
8.00	7.00	3.70	N/A	CTXD8E45
9.00	7.40	3.80	N/A	CTXD9E45
10.00	7.70	4.00	N/A	CTXD10E45
12.00	8.40	4.30	N/A	CTXD12E45
14.00	9.10	4.70	N/A	CTXD14E45
16.00	9.80	4.90	N/A	CTXD16E45



CTXD 90-Degree Elbows

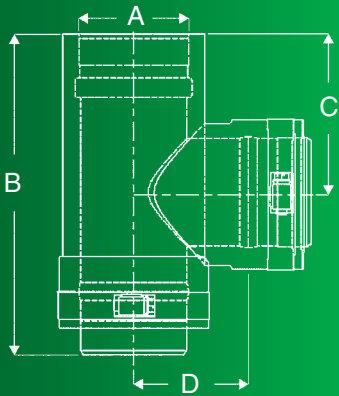


A (in.)	B (in.)	C (in.)	D (in.)	Product Code
3.00	3.90	5.90	N/A	CTXD3E90
4.00	4.40	6.40	N/A	CTXD4E90
5.00	4.90	6.90	N/A	CTXD5E90
6.00	5.40	7.40	N/A	CTXD6E90
7.00	5.90	7.90	N/A	CTXD7E90
8.00	6.40	8.40	N/A	CTXD8E90
9.00	6.90	8.90	N/A	CTXD9E90
10.00	7.40	9.40	N/A	CTXD10E90
12.00	8.40	10.40	N/A	CTXD12E90
14.00	9.40	11.40	N/A	CTXD14E90
16.00	10.10	12.40	N/A	CTXD16E90

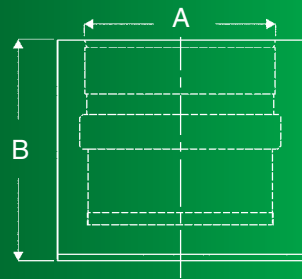
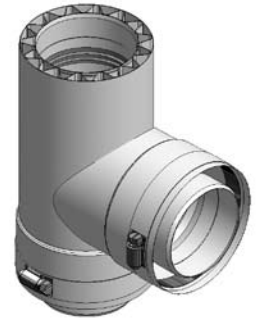


Venting Tees

CTXD Tees

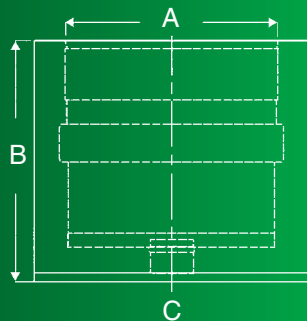
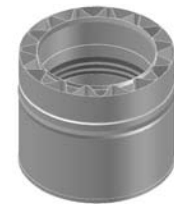


A (in.)	B (in.)	C (in.)	D (in.)	Product Code
3.00	7.30	4.50	3.00	CTXD3T
4.00	8.30	4.80	3.50	CTXD4T
5.00	9.30	5.30	4.00	CTXD5T
6.00	10.30	5.80	4.50	CTXD6T
7.00	11.30	6.30	5.00	CTXD7T
8.00	12.30	6.80	5.50	CTXD8T
9.00	13.30	7.30	6.00	CTXD9T
10.00	14.30	7.80	6.50	CTXD10T
12.00	16.30	9.00	7.00	CTXD12T
14.00	20.30	11.00	8.50	CTXD14T
16.00	22.30	12.00	9.50	CTXD16T



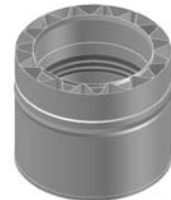
CTXD Tee Caps

A (in.)	B (in.)	C (in.)	D (in.)	Product Code
3.00	3.50	0.00	N/A	CTXD3TC
4.00	3.50	0.00	N/A	CTXD4TC
5.00	3.50	0.00	N/A	CTXD5TC
6.00	3.50	0.00	N/A	CTXD6TC
7.00	3.50	0.00	N/A	CTXD7TC
8.00	3.50	0.00	N/A	CTXD8TC
9.00	3.50	0.00	N/A	CTXD9TC
10.00	3.50	0.00	N/A	CTXD10TC
12.00	3.50	0.00	N/A	CTXD12TC
14.00	3.50	0.00	N/A	CTXD14TC
16.00	3.50	0.00	N/A	CTXD16TC



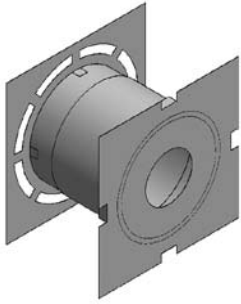
CTXD Drain Tee Caps

A (in.)	B (in.)	C (in.)	D (in.)	Product Code
3.00	3.50	0.63	N/A	CTXD3DTC
4.00	3.50	0.63	N/A	CTXD4DTC
5.00	3.50	0.63	N/A	CTXD5DTC
6.00	3.50	0.63	N/A	CTXD6DTC
7.00	3.50	0.63	N/A	CTXD7DTC
8.00	3.50	0.63	N/A	CTXD8DTC
9.00	3.50	0.63	N/A	CTXD9DTC
10.00	3.50	0.63	N/A	CTXD10DTC
12.00	3.50	0.63	N/A	CTXD12DTC
14.00	3.50	0.63	N/A	CTXD14DTC
16.00	3.50	0.63	N/A	CTXD16DTC



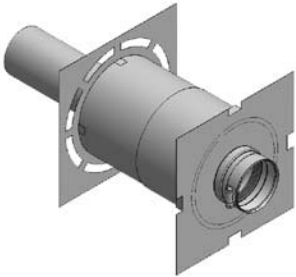
Venting Accessories

CTXD Wall Radiation Shields



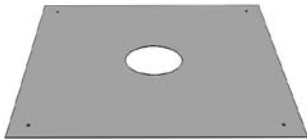
A (in.)	B (in.)	C (in.)	D (in.)	Product Code	Flue Size (in.)
11.00	8.00	N/A	N/A	CTX4WRS	3.00
11.00	8.00	N/A	N/A	CTX5WRS	4.00
12.00	9.00	N/A	N/A	CTX6WRS	5.00
13.00	10.00	N/A	N/A	CTX7WRS	6.00
14.00	11.00	N/A	N/A	CTX8WRS	7.00
15.00	12.00	N/A	N/A	CTX9WRS	8.00
16.00	13.00	N/A	N/A	CTX10WRS	9.00

CTXD Wall Radiation Shield W/Adj. Length

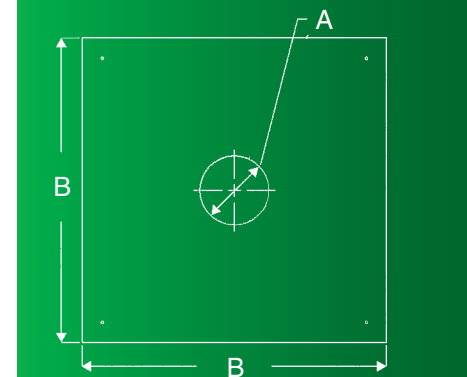
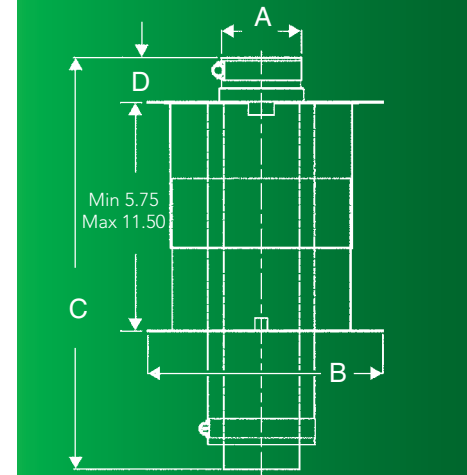
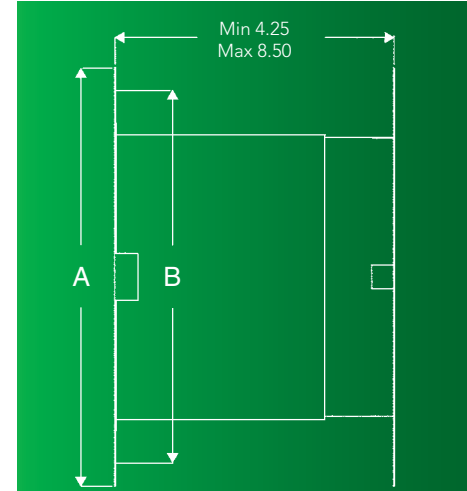


A (in.)	B (in.)	C (in.)	D (in.)	Product Code	Flue Size (in.)
3.00	10.00	18.00	2.00	CTXD3WRSAL	3.00
4.00	11.00	18.00	2.00	CTXD4WRSAL	4.00
5.00	12.00	18.00	2.00	CTXD5WRSAL	5.00
6.00	13.00	18.00	2.00	CTXD6WRSAL	6.00
7.00	14.00	18.00	2.00	CTXD7WRSAL	7.00
8.00	15.00	18.00	2.00	CTXD8WRSAL	8.00
9.00	16.00	18.00	2.00	CTXD9WRSAL	9.00
10.00	17.00	18.00	2.00	CTXD10WRSAL	10.00
12.00	19.00	18.00	2.00	CTXD12WRSAL	12.00
14.00	21.00	18.00	2.00	CTXD14WRSAL	14.00
16.00	23.00	18.00	2.00	CTXD16WRSAL	16.00

CTXD Firestop/Support Plates

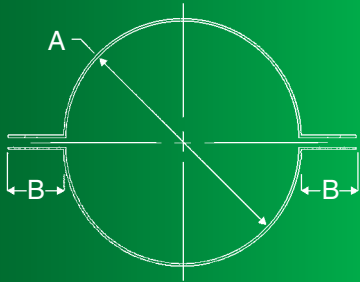


A (in.)	B (in.)	C (in.)	D (in.)	Product Code	Flue Size (in.)
4.04	15.00	N/A	N/A	CTX4FSSP	3.00
5.04	17.00	N/A	N/A	CTX5FSSP	4.00
6.04	17.00	N/A	N/A	CTX6FSSP	5.00
7.04	19.00	N/A	N/A	CTX7FSSP	6.00
8.04	19.00	N/A	N/A	CTX8FSSP	7.00
9.04	22.00	N/A	N/A	CTX9FSSP	8.00
10.04	22.00	N/A	N/A	CTX10FSSP	9.00
10.00	11.00	N/A	N/A	CTX11FSSP	10.00
12.00	13.00	N/A	N/A	CTX13FSSP	12.00
14.00	15.00	N/A	N/A	CTX15FSSP	14.00
16.00	17.00	N/A	N/A </tr		

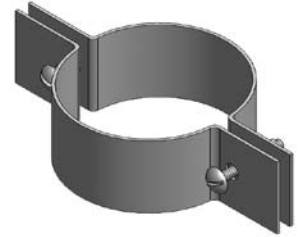


Venting Accessories

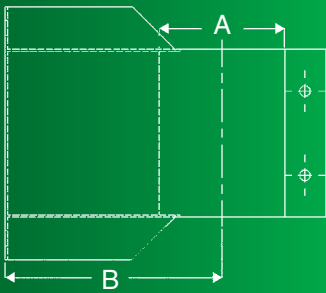
CTXD Support Clamps



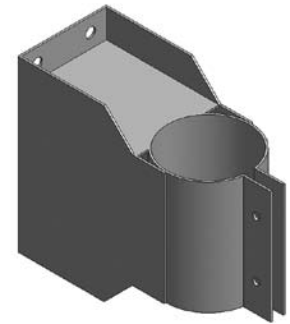
A (in.)	B (in.)	C (in.)	D (in.)	Product Code	Flue Size (in.)
4.00	1.50	N/A	N/A	CTX4SC	3.00
5.00	1.50	N/A	N/A	CTX5SC	4.00
6.00	1.50	N/A	N/A	CTX6SC	5.00
7.00	1.50	N/A	N/A	CTX7SC	6.00
8.00	1.50	N/A	N/A	CTX8SC	7.00
9.00	1.50	N/A	N/A	CTX9SC	8.00
10.00	1.50	N/A	N/A	CTX10SC	9.00
11.00	1.50	N/A	N/A	CTX11SC	10.00
13.00	1.50	N/A	N/A	CTX13SC	12.00
15.00	1.50	N/A	N/A	CTX15SC	14.00
17.00	1.50	N/A	N/A	CTX17SC	16.00



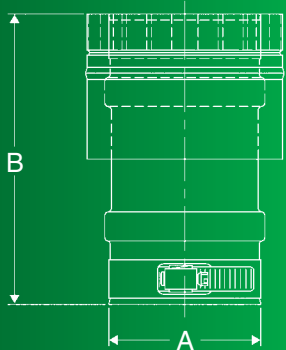
CTXD Wall Supports



A (in.)	B (in.)	C (in.)	D (in.)	Product Code	Flue Size (in.)
4.00	4.00	N/A	N/A	CTX4WS	3.00
5.00	4.50	N/A	N/A	CTX5WS	4.00
6.00	5.00	N/A	N/A	CTX6WS	5.00
7.00	5.50	N/A	N/A	CTX7WS	6.00
8.00	6.00	N/A	N/A	CTX8WS	7.00
9.00	6.50	N/A	N/A	CTX9WS	8.00
10.00	7.00	N/A	N/A	CTX10WS	9.00
11.00	7.50	N/A	N/A	CTX11WS	10.00
13.00	8.50	N/A	N/A	CTX13WS	12.00
15.00	9.50	N/A	N/A	CTX15WS	14.00
17.00	10.50	N/A	N/A	CTX17WS	16.00



CTXD Universal Flue Adaptor



A (in.)	B (in.)	C (in.)	D (in.)	Product Code	Flue Size (in.)
3.00	6.00	N/A	N/A	CTXD3UA	3.00
4.00	6.00	N/A	N/A	CTXD4UA	4.00
5.00	6.00	N/A	N/A	CTXD5UA	5.00
6.00	6.00	N/A	N/A	CTXD6UA	6.00
7.00	6.00	N/A	N/A	CTXD7UA	7.00
8.00	6.00	N/A	N/A	CTXD8UA	8.00
9.00	6.00	N/A	N/A	CTXD9UA	9.00
10.00	6.00	N/A	N/A	CTXD10UA	10.00
12.00	6.00	N/A	N/A	CTXD12UA	12.00
14.00	6.00	N/A	N/A	CTXD14UA	14.00
16.00	6.00	N/A	N/A	CTXD16UA	16.00

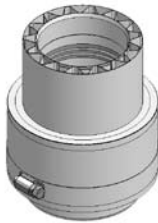


Venting Accessories



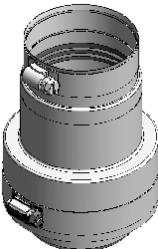
CTXD In increaser Adaptor

A (in.)	B (in.)	C (in.)	D (in.)	Product Code	Flue Size (in.)
4.00	5.00	4.30	N/A	CTXD4IA5	4.00



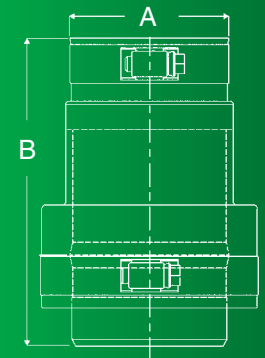
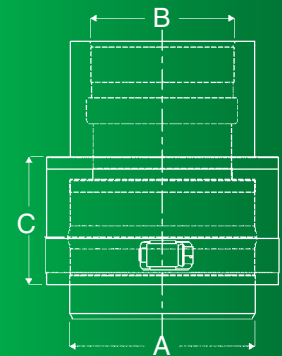
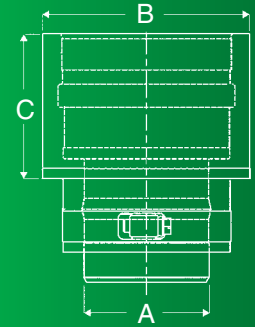
CTXD Reducer Adaptor

A (in.)	B (in.)	C (in.)	D (in.)	Product Code	Flue Size (in.)
7.00	5.00	4.30	N/A	CTXD7RA5	7.00



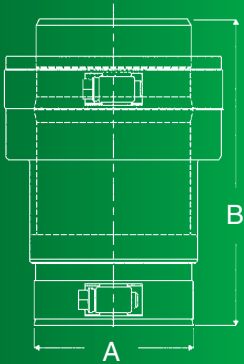
CTXD Double Wall to Single Wall Adaptor

A (in.)	B (in.)	C (in.)	D (in.)	Product Code	Flue Size (in.)
3.00	4.30	N/A	N/A	CTXD3D-S	3.00
4.00	4.30	N/A	N/A	CTXD4D-S	4.00
5.00	4.30	N/A	N/A	CTXD5D-S	5.00
6.00	4.30	N/A	N/A	CTXD6D-S	6.00
7.00	4.30	N/A	N/A	CTXD7D-S	7.00
8.00	4.30	N/A	N/A	CTXD8D-S	8.00
9.00	4.30	N/A	N/A	CTXD9D-S	9.00
10.00	4.30	N/A	N/A	CTXD10D-S	10.00
12.00	4.30	N/A	N/A	CTXD12D-S	12.00
14.00	4.30	N/A	N/A	CTXD14D-S	14.00
16.00	4.30	N/A	N/A	CTXD16D-S	16.00

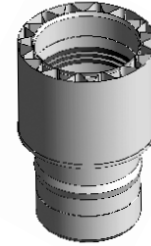


Venting Accessories

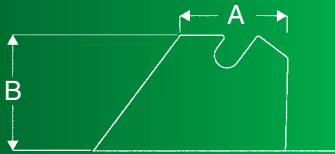
CTXD Single Wall to Double Wall Adaptor



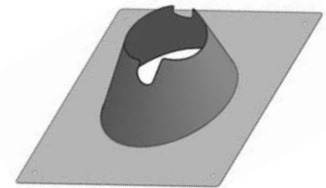
A (in.)	B (in.)	C (in.)	D (in.)	Product Code	Flue Size (in.)
3.00	4.30	N/A	N/A	CTXD3S-D	3.00
4.00	4.30	N/A	N/A	CTXD4S-D	4.00
5.00	4.30	N/A	N/A	CTXD5S-D	5.00
6.00	4.30	N/A	N/A	CTXD6S-D	6.00
7.00	4.30	N/A	N/A	CTXD7S-D	7.00
8.00	4.30	N/A	N/A	CTXD8S-D	8.00
9.00	4.30	N/A	N/A	CTXD9S-D	9.00
10.00	4.30	N/A	N/A	CTXD10S-D	10.00
12.00	4.30	N/A	N/A	CTXD12S-D	12.00
14.00	4.30	N/A	N/A	CTXD14S-D	14.00
16.00	4.30	N/A	N/A	CTXD16S-D	16.00



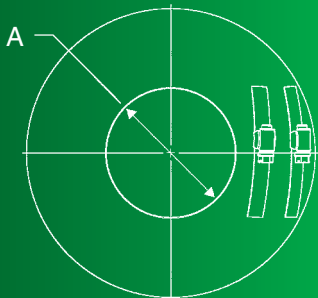
CTXD Adjustable Roof Flashing



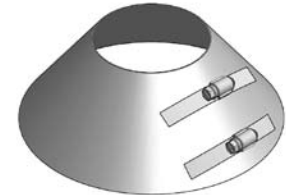
A (in.)	B (in.)	C (in.)	D (in.)	Product Code	Flue Size (in.)
5.00	7.00	N/A	N/A	CTX3FA	3.00
6.00	7.00	N/A	N/A	CTX4FA	4.00
7.00	7.00	N/A	N/A	CTX5FA	5.00
8.00	7.00	N/A	N/A	CTX6FA	6.00
9.00	7.00	N/A	N/A	CTX7FA	7.00
10.00	7.00	N/A	N/A	CTX8FA	8.00
11.00	7.00	N/A	N/A	CTX9FA	9.00
12.00	7.00	N/A	N/A	CTX10FA	10.00
14.00	7.00	N/A	N/A	CTX12FA	12.00
16.00	7.00	N/A	N/A	CTX14FA	14.00
18.00	7.00	N/A	N/A	CTX16FA	16.00



CTXD Flashing Collars

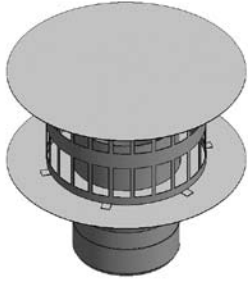


A (in.)	B (in.)	C (in.)	D (in.)	Product Code	Flue Size (in.)
4.00	N/A	N/A	N/A	CTX4FC	3.00
5.00	N/A	N/A	N/A	CTX5FC	4.00
6.00	N/A	N/A	N/A	CTX6FC	5.00
7.00	N/A	N/A	N/A	CTX7FC	6.00
8.00	N/A	N/A	N/A	CTX8FC	7.00
9.00	N/A	N/A	N/A	CTX9FC	8.00
10.00	N/A	N/A	N/A	CTX10FC	9.00
11.00	N/A	N/A	N/A	CTX11FC	10.00
13.00	N/A	N/A	N/A	CTX13FC	12.00
15.00	N/A	N/A	N/A	CTX15FC	14.00
17.00	N/A	N/A	N/A	CTX17FC	16.00

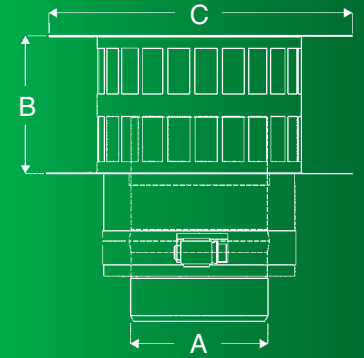


Venting Terminations

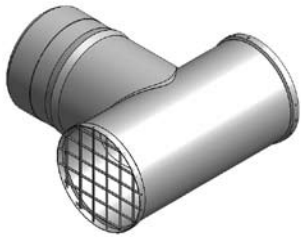
CTXD Rain Caps



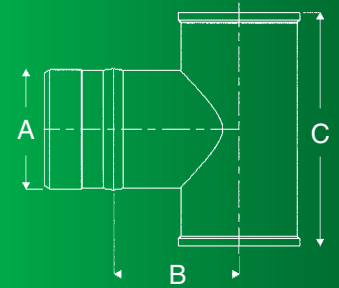
A (in.)	B (in.)	C (in.)	D (in.)	Product Code
3.00	3.50	6.80	N/A	CTXD3RC
4.00	4.50	8.90	N/A	CTXD4RC
5.00	5.80	11.30	N/A	CTXD5RC
6.00	6.80	13.50	N/A	CTXD6RC
7.00	7.80	15.80	N/A	CTXD7RC
8.00	8.80	18.00	N/A	CTXD8RC
9.00	10.00	20.00	N/A	CTXD9RC
10.00	11.00	22.00	N/A	CTXD10RC
12.00	13.00	27.00	N/A	CTXD12RC
14.00	15.00	31.00	N/A	CTXD14RC
16.00	17.00	36.00	N/A	CTXD16RC



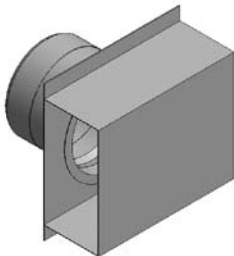
CTXD Termination Tees



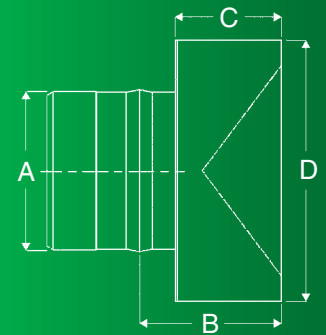
A (in.)	B (in.)	C (in.)	D (in.)	Product Code
3.00	3.00	6.00	N/A	CTX3TT
4.00	3.50	7.00	N/A	CTX4TT
5.00	4.00	8.00	N/A	CTX5TT
6.00	4.50	9.00	N/A	CTX6TT



CTXD Termination Boxes

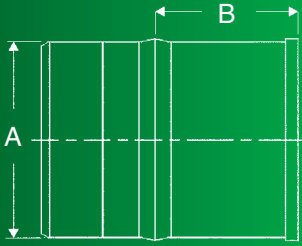


A (in.)	B (in.)	C (in.)	D (in.)	Product Code
3.00	2.30	2.00	5.00	CTX3SQT
4.00	2.30	2.00	6.00	CTX4SQT

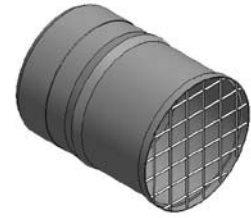


Venting Terminations

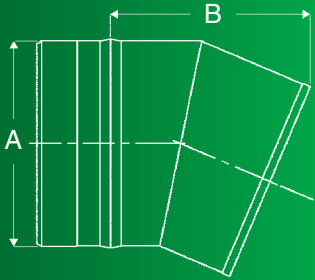
CTXD Horizontal Terminations



A (in.)	B (in.)	C (in.)	D (in.)	Product Code
3.00	2.00	N/A	N/A	CTX3HT
4.00	2.00	N/A	N/A	CTX4HT



CTXD Angled Horizontal Terminations



A (in.)	B (in.)	C (in.)	D (in.)	Product Code
5.00	4.80	N/A	N/A	CTX5AHT
6.00	5.60	N/A	N/A	CTX6AHT
7.00	6.40	N/A	N/A	CTX7AHT
8.00	7.10	N/A	N/A	CTX8AHT
9.00	7.90	N/A	N/A	CTX9AHT
10.00	8.70	N/A	N/A	CTX10AHT
12.00	10.20	N/A	N/A	CTX12AHT
14.00	11.70	N/A	N/A	CTX14AHT
16.00	13.20	N/A	N/A	CTX16AHT



Warranty

Security Chimneys™ 15-year warranty

Security Chimneys™ warrants the CTXD Secure Seal™ gas vent system to be free of defects in material and manufacturing workmanship. This is a limited warranty subject to the following time periods and conditions.

Warranty period

The warranty period is 15 years from the date of installation when used for venting listed, Category II, III or IV gas heating equipment or water heaters that specify this type of venting system.

Conditions

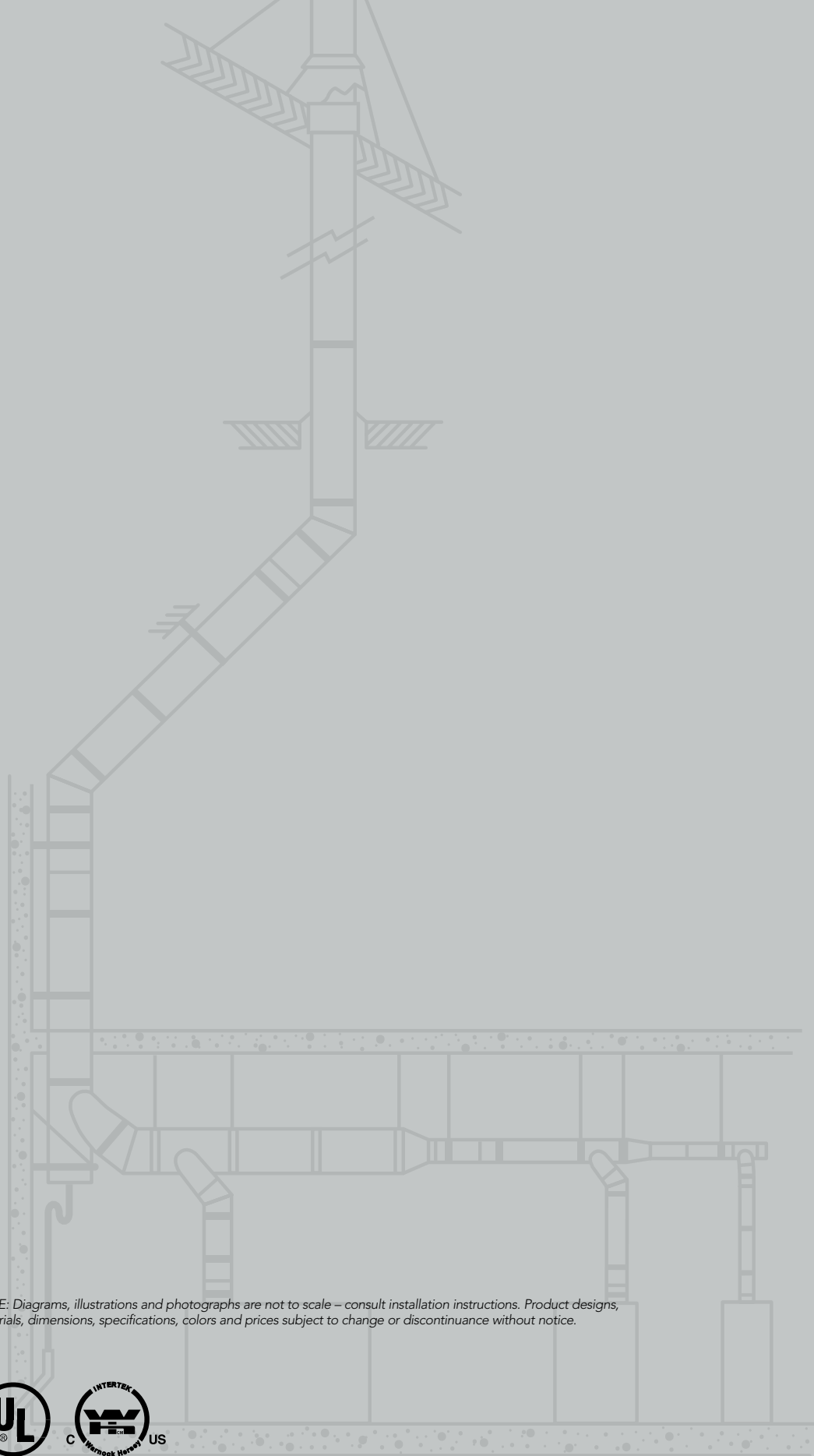
The CTXD Secure Seal warranty is subject to the following conditions:

1. The vent system is installed according to the manufacturer's written instructions.
2. The use of the vent system is limited to those appliances for which it is intended.
3. The vent system is inspected and maintained annually, beginning one year after the date of installation and continuing throughout the warranty period.

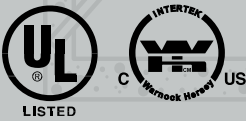
If the CTXD Secure Seal gas vent system does not meet conditions of the warranty specified above, and assuming normal and proper installation, use and maintenance, the buyer shall promptly notify Security Chimneys in writing. Security Chimneys shall thereupon correct any defect at its expense by replacing any defective or damaged parts of the system supplied under this contract. This obligation, however, is limited to replacement parts and does not include any responsibility or obligation with respect to the shipment, removal or installation of the replaced system or parts. The warranty period for replacement shall run from the date of the original installation of the original system.

These warranties are exclusive and in lieu of all other warranties, whether written, oral, implied or statutory. Security Chimneys makes no other expressed, implied or statutory warranties to the buyer.

The foregoing shall constitute the only remedies to the buyer for claims based on a defect in, or failure of the system or its components, whether said claims are designated as arising in contract, warranty, tort (including negligence), strict liability, indemnity or otherwise. Upon the expiration of the warranty period, all such liability shall terminate. Liabilities for special, consequential, or incidental damages are expressly excluded. Security Chimneys does not warrant the system or its components against normal wear and tear due to operation or environment.



NOTE: Diagrams, illustrations and photographs are not to scale – consult installation instructions. Product designs, materials, dimensions, specifications, colors and prices subject to change or discontinuance without notice.



2125 Monterey, Laval, Quebec, Canada
 H7L 3T6
 Phone: 450-973-9999
 Fax: 450-687-9569
www.securitychimneys.com

